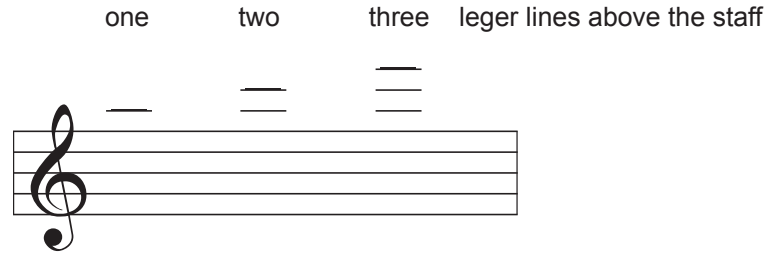
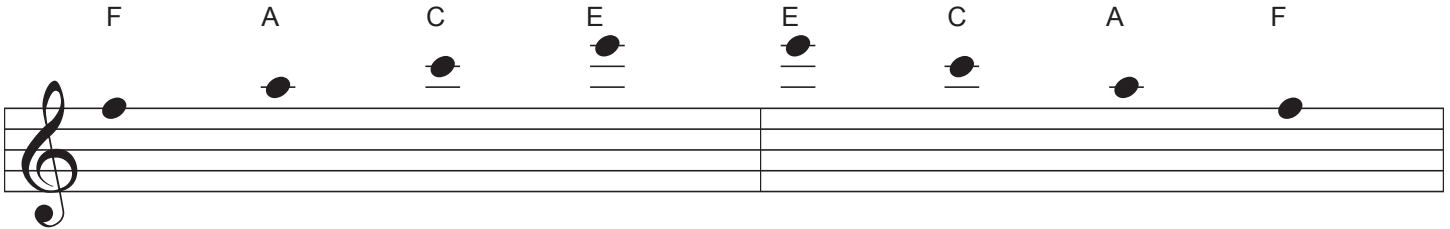


PRELIMINARY LESSON 8

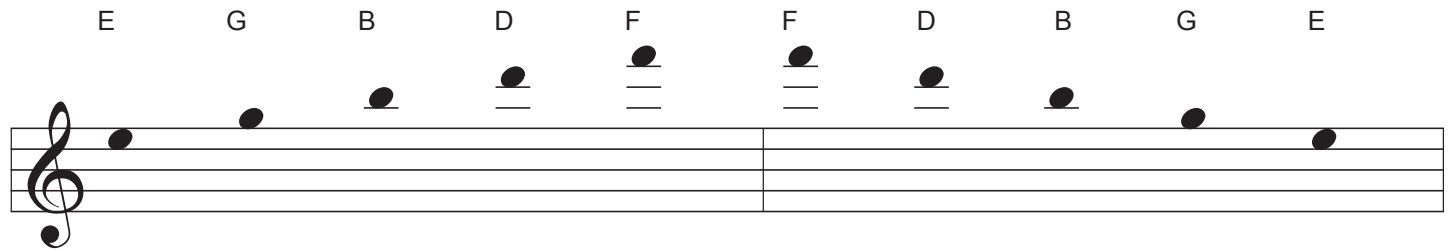
Leger Lines above the staff.



Using the fifth line as a starting point will produce:



In between each leger line, there is a space. Using the fourth space as a starting point will produce:



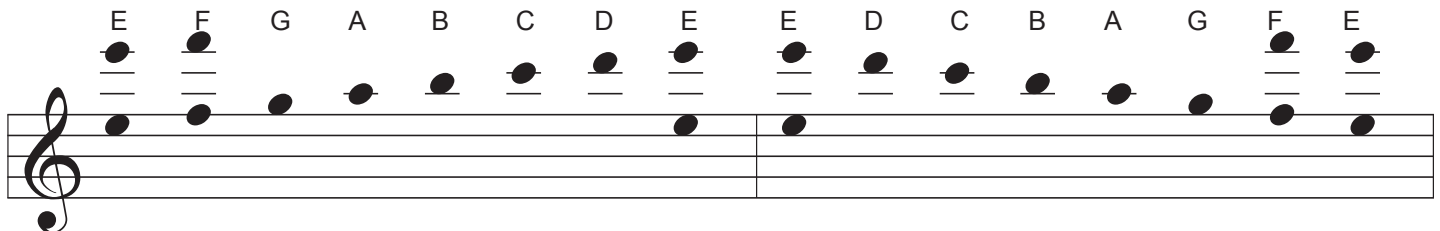
Alphabetically this will produce:

Forward:

- E-fourth space, third line above the staff.
- F-fifth line, fourth space above the staff
- G-first space above the staff
- A-first line above the staff
- B-second space above the staff
- C-second line above the staff
- D-third space above the staff
- E-fourth space, third line above the staff

Retrograde:

- E-fourth space, third line above the staff
- D-third space above the staff
- C-second line above the staff
- B-second space above the staff
- A-first line above the staff
- G-first space above the staff
- F-fifth line, fourth space above the staff
- E-fourth space, third line above the staff



**(Editor:** The seemingly fine detail that is suggested in these exercises will produce good results. All serious guitar teachers will most likely have had those students who perhaps learned to "decipher" music to some degree but never got to the point where they could actually "read" music. There is a good chance that those students only paid marginal attention to the fine detail. **G.A.)**