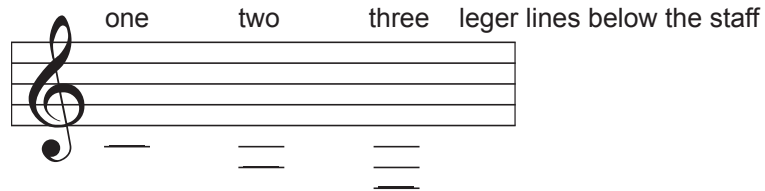
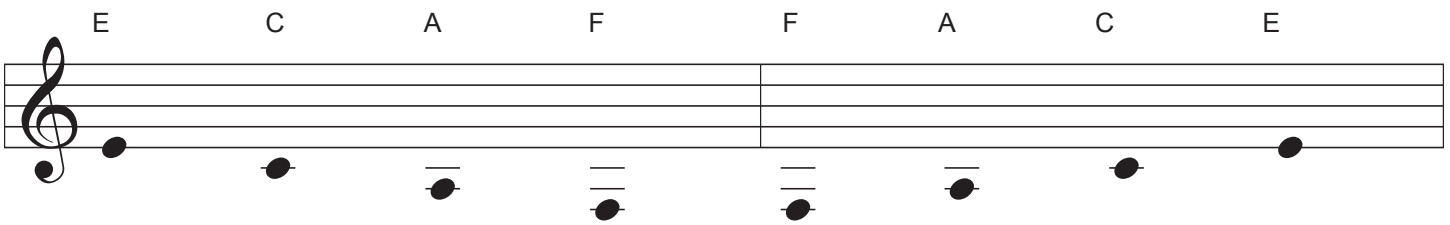


PRELIMINARY LESSON 7

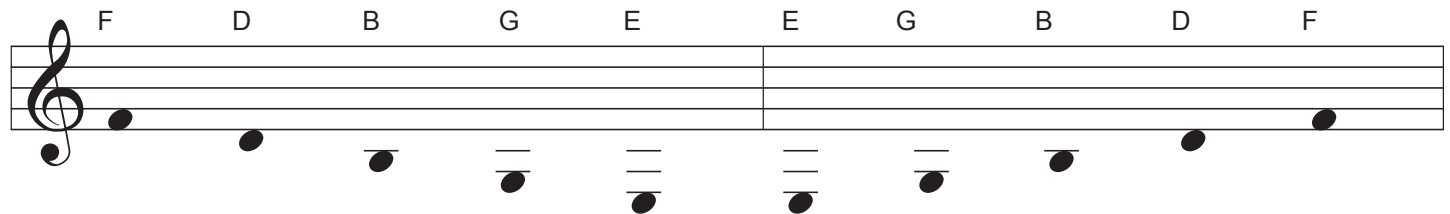
Not only is music written within the staff but, with the assistance of short lines called "leger lines" it may also be written above and below the staff. The guitar has a pitch range which, in the standard tuning, will require at least three leger lines below the staff.



Using the first line as a starting point will produce:



In between each leger line, there is a space. Using the first space as a starting point will produce:



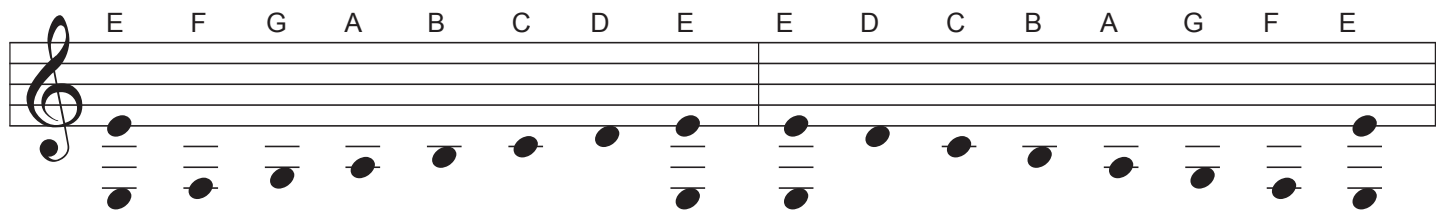
Alphabetically this will produce:

Forward:

- E-fourth space below the staff, first line of the staff.
- F-third line below the staff.
- G-third space below the staff
- A-second line below the staff
- B-second space below the staff
- C-first line below the staff
- D-first space below the staff
- E-fourth space below the staff, first line of the staff

Retrograde:

- E-fourth space below the staff, first line of the staff
- D-first space below the staff
- C-first line below the staff
- B-second space below the staff
- A-second line below the staff
- G-third space below the staff
- F-third line below the staff
- E-fourth space below the staff, first line of the staff



(Editor: Once again, the concept here is to vocallize the note names and "talk" your way through the note placement. This takes a greater mental effort than some would imagine. **G.A.)**