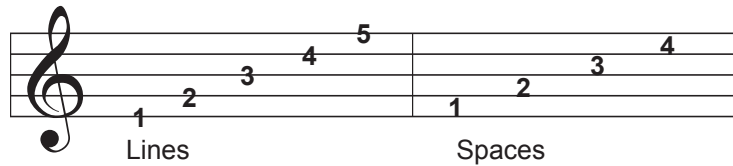


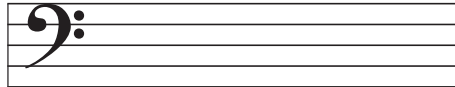
PRELIMINARY LESSON 6.

Music is written on a five line, four space arrangement called a "staff." The lines and spaces are numbered from the bottom to the top.

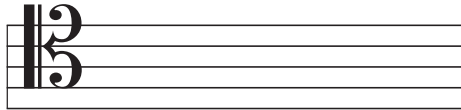


A note written on this staff takes its name from the line or space it is placed upon. The musical characters that determine the names of the lines and spaces are called "clefs."

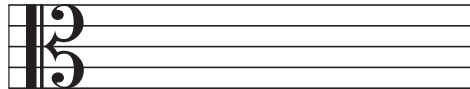
The Bass clef



The Tenor clef

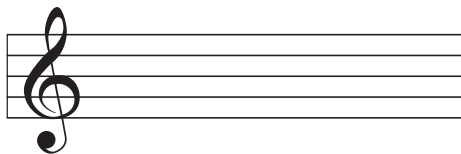


The Alto clef

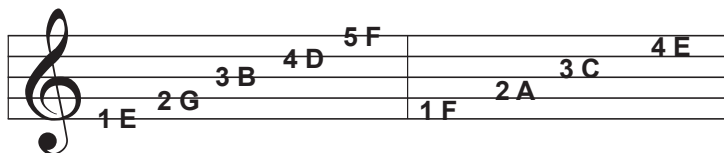


.....and finally the clef that is used for writing guitar music

The **Treble** clef



This clef produces the following names for the lines and spaces



Because this clef curls around the second line ("G" line) it is sometimes referred to as the "G" clef. The treble clef symbol is actually a very stylized letter "G". Some instruments require that the performer learn to read in two or even three clefs.

Note that in the treble clef, the first line is called "E" and the fourth space is also called "E". The first space is called "F" and the fifth line is also called "F". In letter names they appear to be the same but, in musical sound, they are eight letter names apart.