

Name these notes: (some may have more than one correct answer.)

3rd str. 3rd fret= \_\_\_\_\_

2nd str. 1st fret= \_\_\_\_\_

1st str. 4th fret= \_\_\_\_\_

4th str. 3rd fret= \_\_\_\_\_

2nd str. 4th fret= \_\_\_\_\_

1st str. 1st fret= \_\_\_\_\_

4th str. 1st fret= \_\_\_\_\_

3rd str. 2nd fret= \_\_\_\_\_

3rd str. open= \_\_\_\_\_

1st str. 2nd fret= \_\_\_\_\_

1st str. open= \_\_\_\_\_

4th str. 4th fret= \_\_\_\_\_

4th str. open= \_\_\_\_\_

2nd str. open= \_\_\_\_\_

2nd str. 2nd fret= \_\_\_\_\_

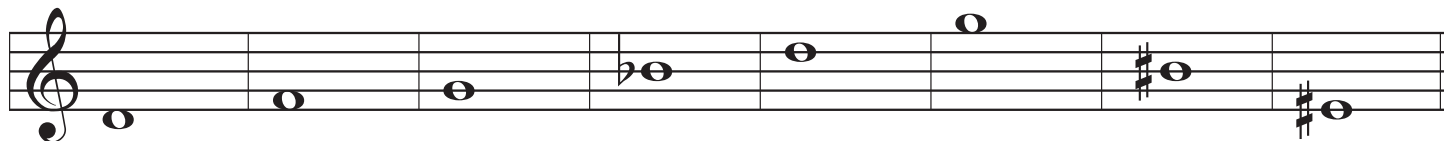
2nd str. 5th fret= \_\_\_\_\_

3rd str. 4th fret= \_\_\_\_\_

1st str. 5th fret= \_\_\_\_\_

4th str. 5th fret= \_\_\_\_\_

Identify the note by its name. Mark fret with a plain number and the string with a circled number.



What are these symbols and what is so special about them?

b = \_\_\_\_\_

♯ = \_\_\_\_\_

♭ = \_\_\_\_\_

♮ = \_\_\_\_\_

♯ = \_\_\_\_\_

♮ = \_\_\_\_\_

♮ = \_\_\_\_\_

♮ = \_\_\_\_\_

What exactly does the dot do to the note? \_\_\_\_\_