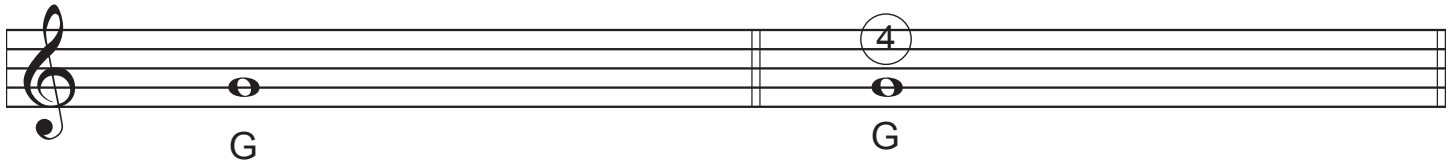


"Tuning the 4th String"

The note "G" is usually played as the 3rd string "open."

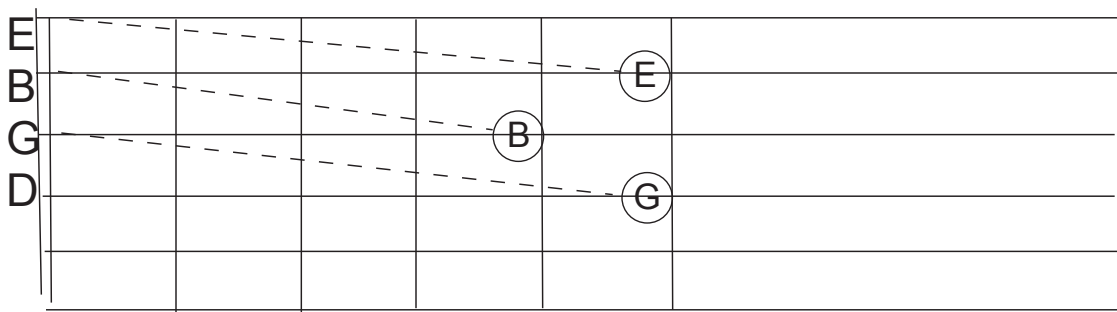
This same note can be played at the 5th fret of the 4th string.



We have already gone through this process several times when tuning the 2nd string and also when tuning the 3rd string. It may be a good idea to review the process by looking back to Lesson 3c (tuning the 2nd string) and Lesson 4c. (tuning the 3rd str.) Once you have established the proper tuning of the first three strings, you can proceed to tuning the 4th string. Notice that we are tuning the strings in relation to each other. Your guitar might still not be in tune with some other instrument but the strings will sound correct in relation to each other.

Press the 4th string at the 5th fret with any left hand finger. This note must be adjusted to sound the same as the open 3rd string. Listen carefully. Be patient. Tuning should not be rushed. You are depending on your ear.

The diagram below should look a bit like the fingerboard of the guitar up to the 5th fret. Imagine that the guitar is laying in your lap facing upward.



Examine the above diagram closely and you should notice that it is a pictorial demonstration of the tuning process. So far we have learned the notes on the first four strings so it is only necessary to be able to tune those four strings.