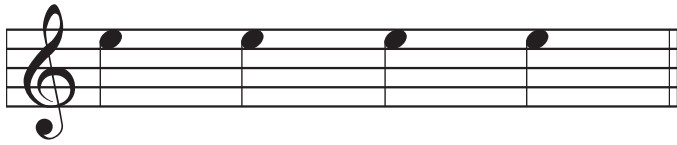
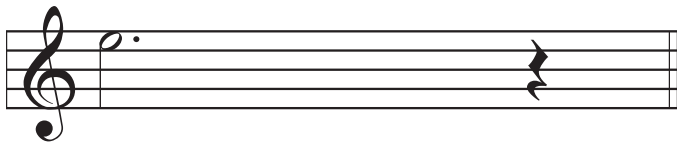


What kind of note is this and what is so special about it? \_\_\_\_\_  
\_\_\_\_\_



What kind of notes are these and what is special about them? \_\_\_\_\_  
\_\_\_\_\_

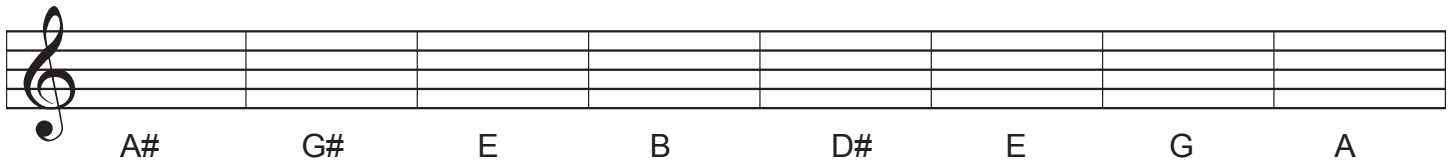
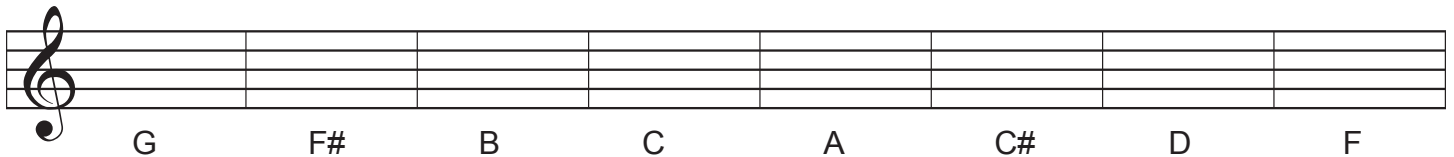


What kind of note is the first note in this measure and what is that other symbol? \_\_\_\_\_  
\_\_\_\_\_



What kind of notes are the black notes and what is so special about them? What is the white note with the stem? \_\_\_\_\_  
\_\_\_\_\_

Using whole notes, write these notes on to the staff.



Progress Report: \_\_\_\_\_  
\_\_\_\_\_  
\_\_\_\_\_  
\_\_\_\_\_  
\_\_\_\_\_