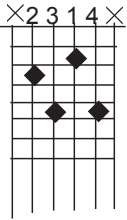


(Book 5) Supplement 7a.

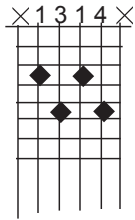
Open Voiced Root Position Chords (bass note on "A" string)

6th to 7th and altered 5ths

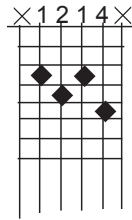
C6
Unquestionably one of the hardest chords to finger on the guitar. - caused by the 2-3 extension fingering.



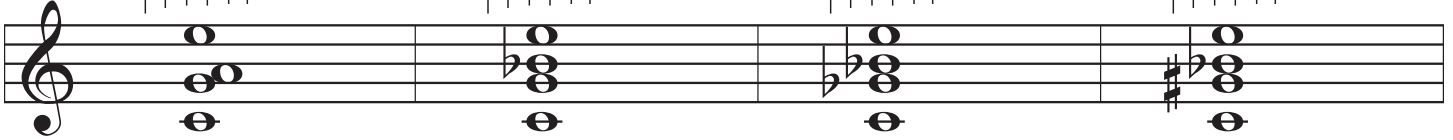
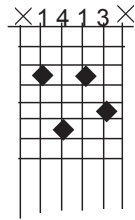
C7



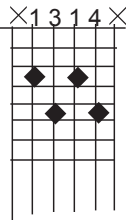
C7b5



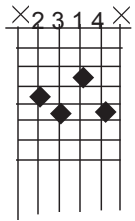
C7+5



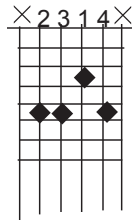
Altered **C7**
Roots



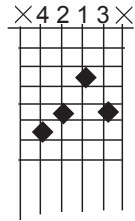
C7b9



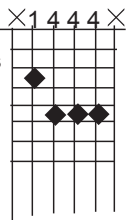
C9



C7#9

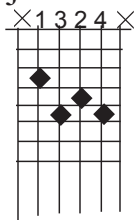


Major **C**
Series

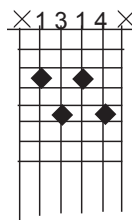


Some players might use a different set of fingers.

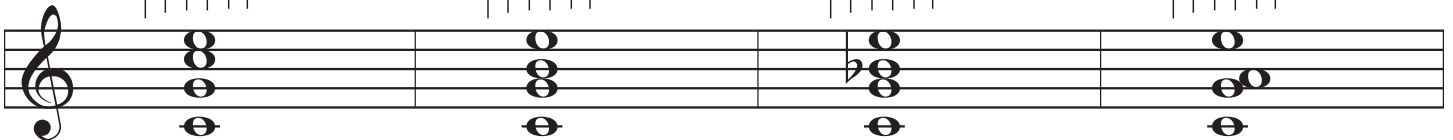
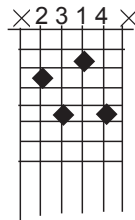
Cmaj7



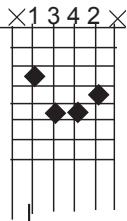
C7



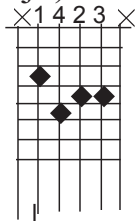
C6



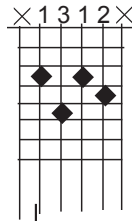
Minor **Cm**
Series



Cm(maj7)



Cm7



Cm6

