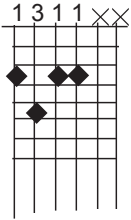


(Book 5) Supplement 6a.

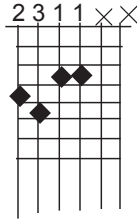
Open Voiced 3rd Inversion Chords (bass on E string)

6th to 7th and altered 5ths

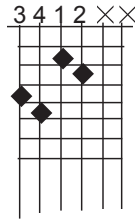
B \flat 6



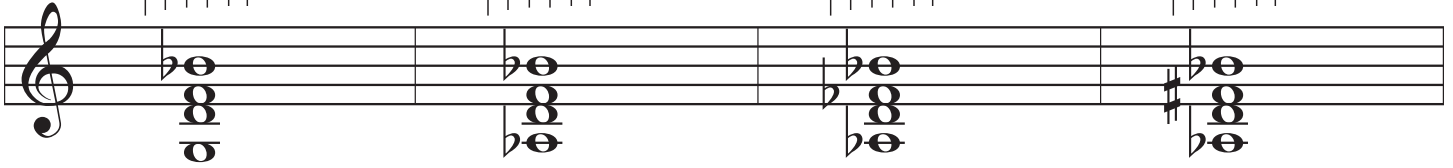
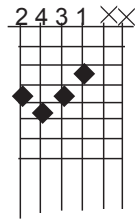
B \flat 7



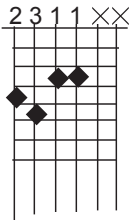
B \flat 7b5



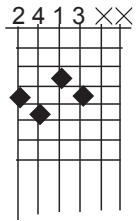
B \flat 7+5



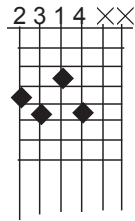
Altered Roots B \flat 7



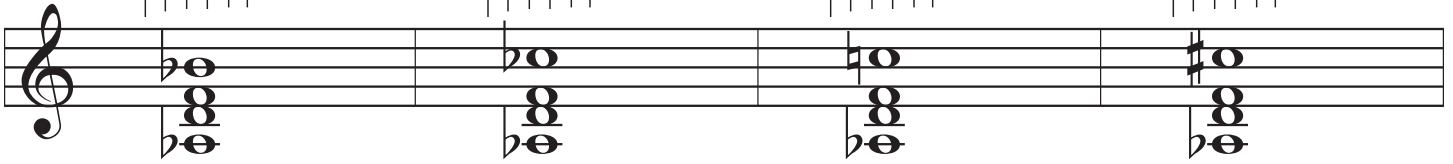
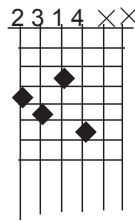
B \flat 7b9



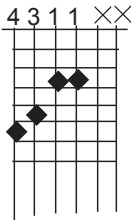
B \flat 9



B \flat 7#9

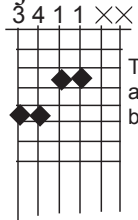


Major Series B \flat



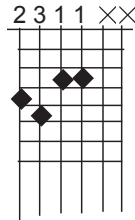
Notice that this chord seems to actually be, and actually is, in Root Position.

B \flat maj7

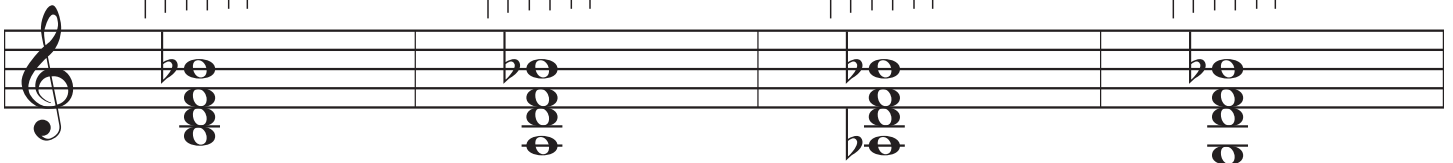
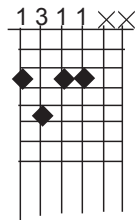


The maj7 makes a rather poor bass note.

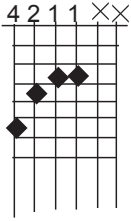
B \flat 7



B \flat 6

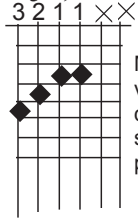


Minor Series B \flat m



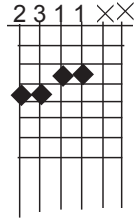
This minor chord is also essentially in Root Position.

B \flat m(maj7)



Maj 7 in the bass voice is rather dark and more so in a low fret position.

B \flat m7



B \flat m6

