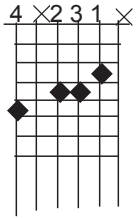


(Book 5) Supplement 5b.

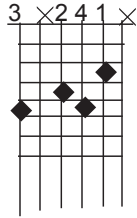
Dispersed Voiced 2nd Inversion Chords Series 1. (bass on E string)

6th to 7th and altered 5ths

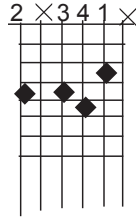
D6



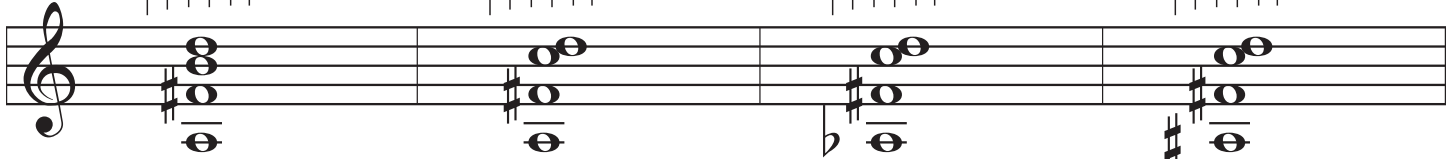
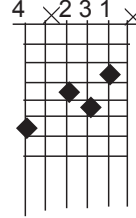
D7



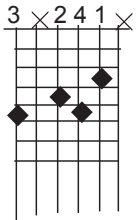
D7b5



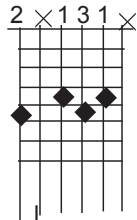
D7+5



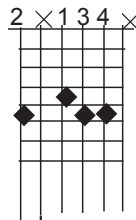
Altered D7 Roots



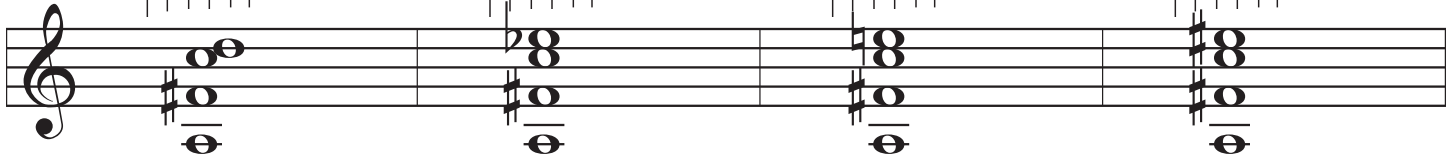
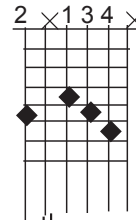
D7b9



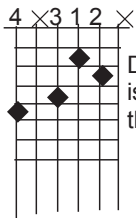
D9



D7#9

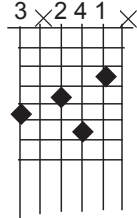


Major D Series

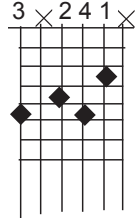


Doubling the 5th is appropriate in this inversion.

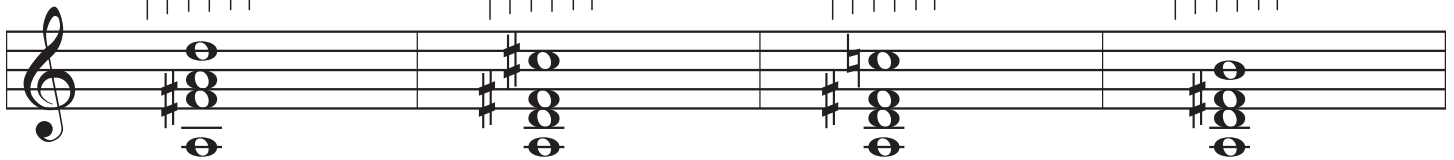
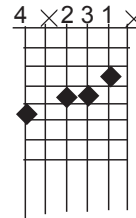
Dmaj7



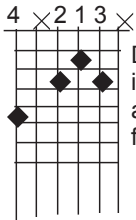
D7



D6

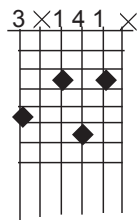


Minor Series

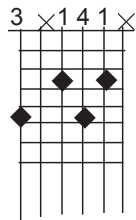


Doubling the 5th is needed here although it makes for a bit of a reach.

Dm(maj7)



Dm7



Dm6

