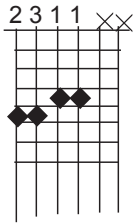


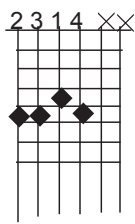
(Book 5) Supplement 5a.
 Open Voiced 2nd Inversion Chords (bass on E string)

6th to 7th and
 altered 5ths

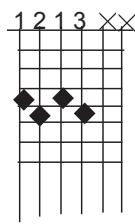
D6



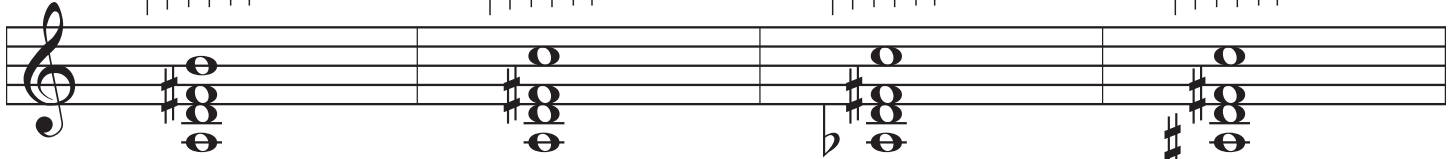
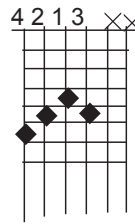
D7



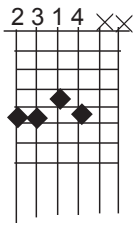
D7b5



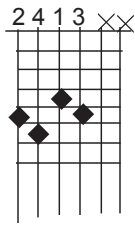
D7+5



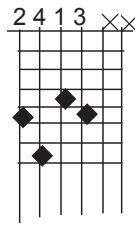
Altered D7
 Roots



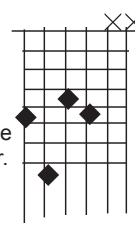
D7b9



D9

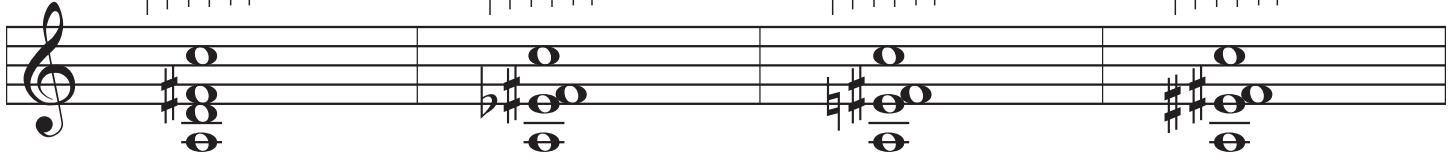


D7#9

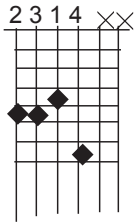


Tough to play and nearly intolerable to the ear.

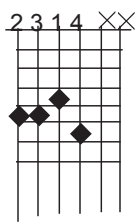
The #9 and the 3rd end up on adjacent strings and are only separated by a 1/2 tone.



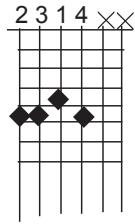
Major D Series



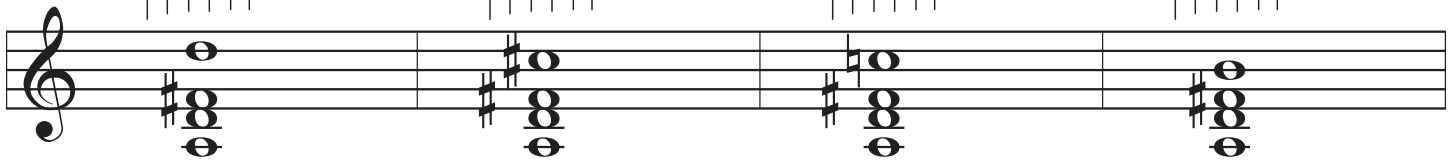
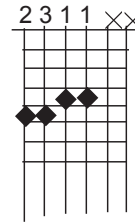
Dmaj7



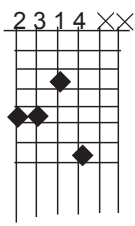
D7



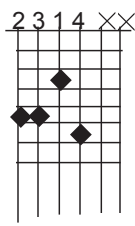
D6



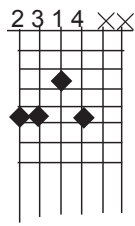
Minor Series



Dm(maj7)



Dm7



Dm6

