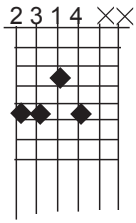


(Book 5) Supplement 4a.

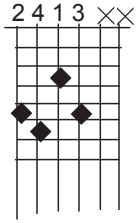
Open Voiced 1st Inversion Chords (bass on E string)

6th to 7th and altered 5ths

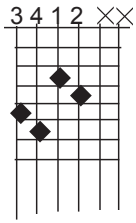
F6



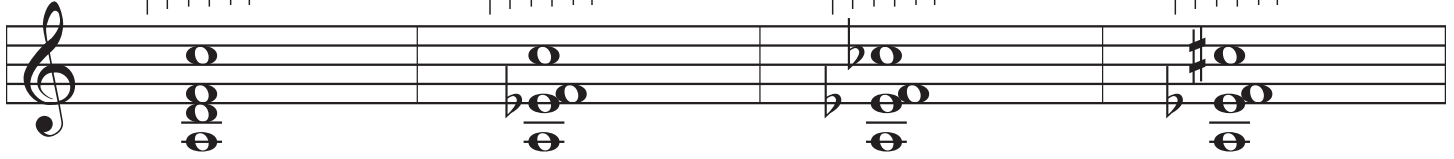
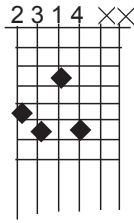
F7



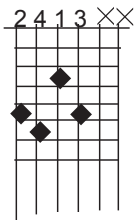
F7b5



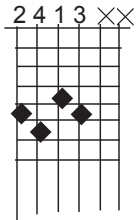
F7+5



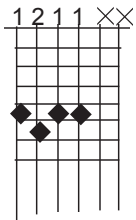
Altered F7 Roots



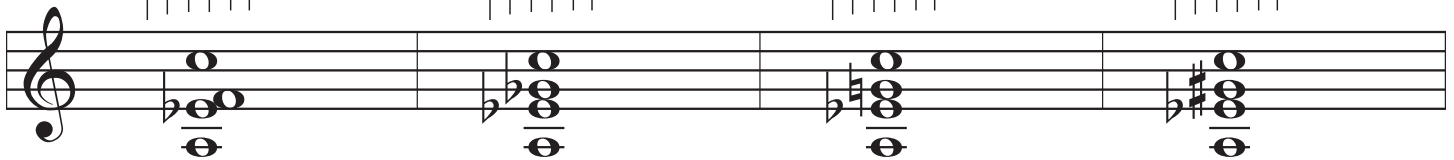
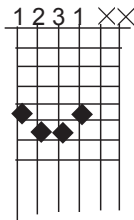
F7b9



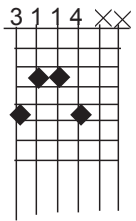
F9



F7#9

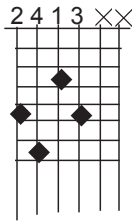


Major Series F



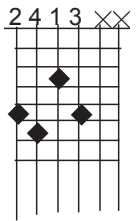
Notice that the 5th is doubled in the four part triad.

Fmaj7

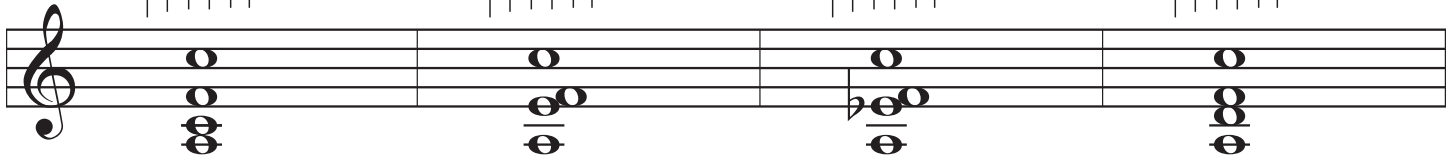
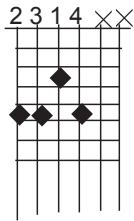


Difficult reach.

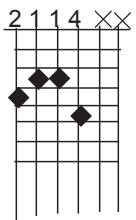
F7



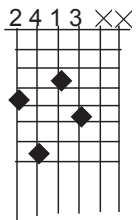
F6



Minor Series Fm

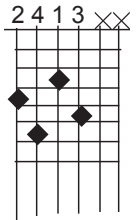


Fm(maj7)

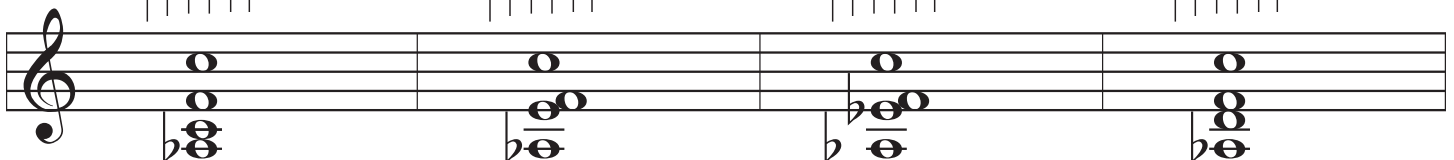
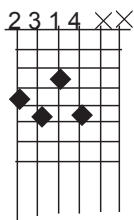


Difficult reach.

Fm7



Fm6



Undoubtedly, some chord fingerings will never make it to your "favourites" list.