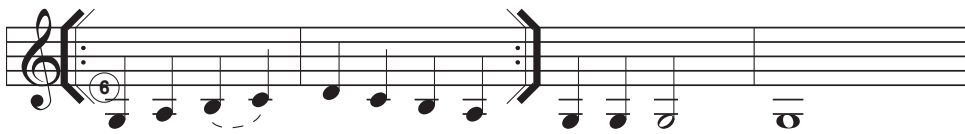
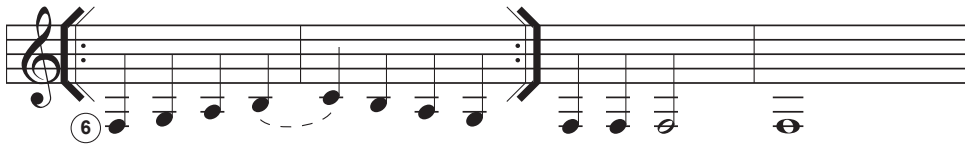
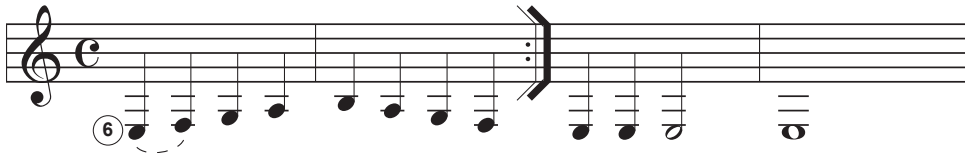


(Book 4) Lesson 21.

Five Tone Scales Combining the E and A Strings

The broken line slur indicates the half tones.



From this point onward: Unisons on A and D strings.



From this point onward: Unisons on A-D and D-G strings.



Once more, because the strings in question are tuned a perfect fourth apart, the fingering system is the same as on the A-D, D-G and B-E string combinations.

1. If a half tone occurs within the first three notes, begin with the first finger.
2. If no half tone occurs within the first three notes, begin with the second finger.
3. These rules do not apply in the open first position because the open strings effectively give you five fingers to work with, the open string acting as the ghost finger.

These five tone studies should also be done in backward order starting from the highest note. In this case the fingering system is generally as follows:

1. If a half tone occurs within the highest three notes, begin with the fourth finger.
2. If no half tone occurs within the highest three notes, begin with the third finger.
3. Except in open first position.

Different key signatures do not affect the basic fingering methodology. The five tone scales are a good place to begin substituting different key signatures on a daily basis.

Previous volumes of "Guitar Fundamentals" contain many variations on the five tone scales. Search for them and apply them to the five tone scales on the lowest two strings.