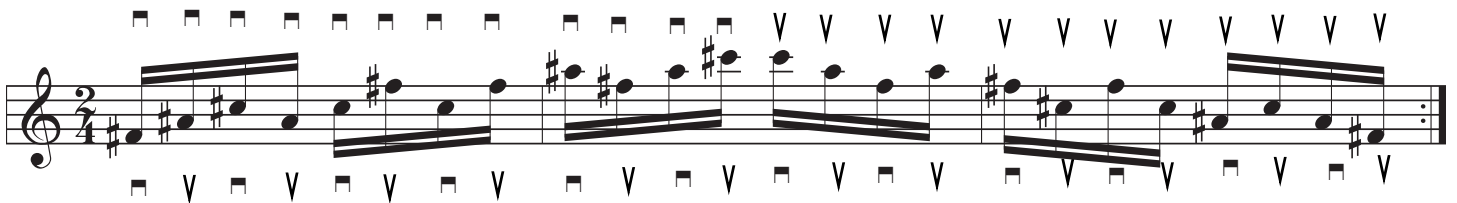
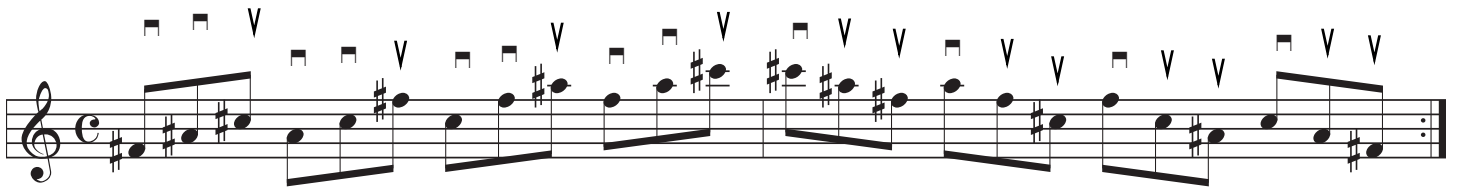
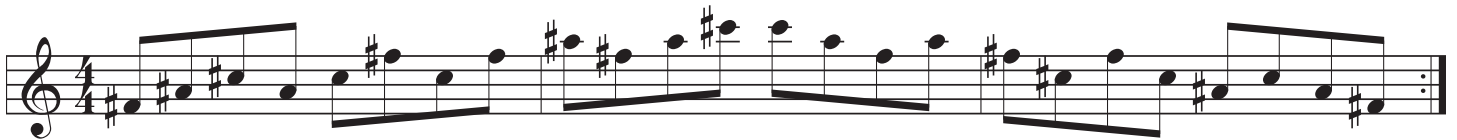
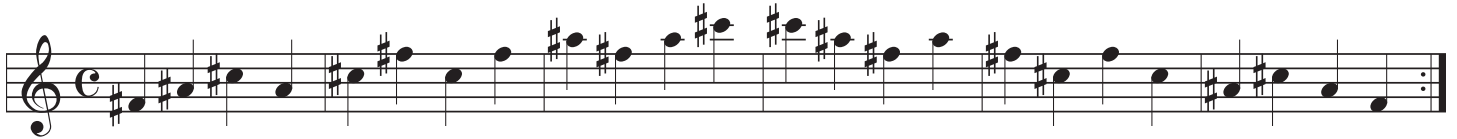


(Book 3) Lesson 31b.

Extended Arpeggio Rhythmic Forms

Apply these rhythmic arpeggio formats to the the triad studies on the previous page.
Choose a slow enough tempo to be able to maintain the same basic quarter note speed through out.



Several picking techniques are demonstrated above. Other possibilities exist, and if in doubt, refer back to the early lessons in Book 2. All picking formulas are viable and should be practiced dilligently.

Also practice moving all inversions back to their original "low position" triad status, altering only the possible chords. Work up the fingerboard in half tones from the lowest extreme.

- Root position: E, Em and E+ (Edim not available)
- First Inversion: C and C+ (Cm and Cdim not available)
- Second Inversion: G and G+ (Gm and Gdim not available)

Tired of arpeggios? Don't allow them to disappear from your reviewing schedule!