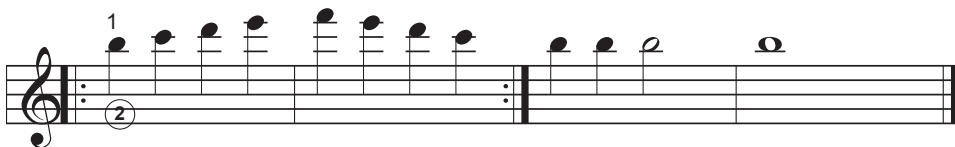
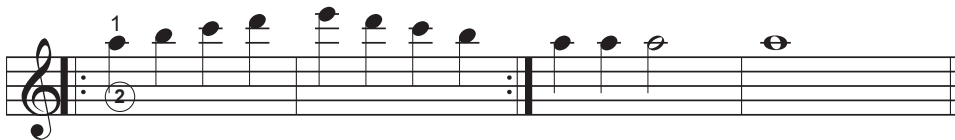
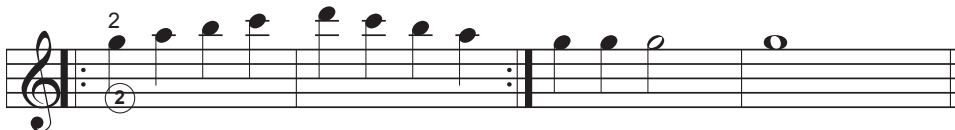
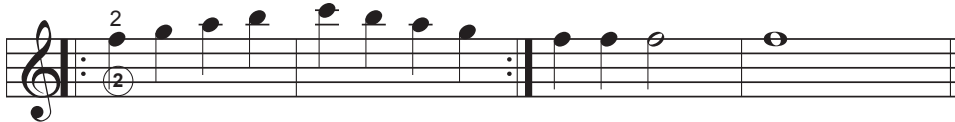
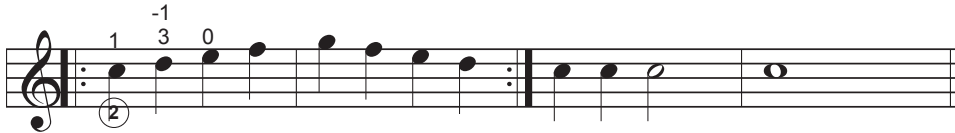


# (Book 2) Lesson 16a.

## Five Tone Studies on the "B" and "E" Strings:

All of the Five Tone Scales begin on the 2nd string. Each Five Tone Scale remains within one position. Read all of the instructions on the right hand edge of the page before you play.



### Basis of Fingering for Combining the "B" and "E" Strings

To determine the starting finger, use the following plan.

1. If a half tone occurs within the first three notes, begin with the first finger.

2. If no half tone occurs within the first three notes, begin with the second finger.

3. These rules do not apply when playing in first position, using some open strings. Remember that the first position is sacred, having a ghost, fifth finger. (open strings)

Keep watch over how you pivot from one string to the next. These pivoting fingerings will not be shown. They are for you to find.

Play slowly enough to stay in total control of your fingers. If the fingers begin to play the patterns without the brain being present, you have simply memorized the patterns rather than having learned the lesson. (This can happen to even the best players.)

Play the whole page as a continuous study, rather than each line as a separate entity.

Read the note on the down beat and move the eyes ahead on the up beat.