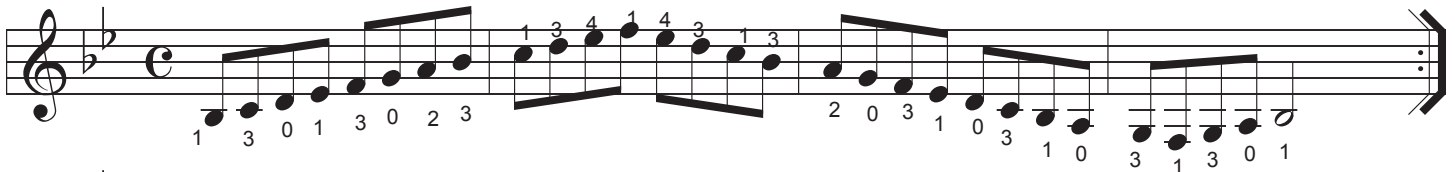


Special Notice: Although there are still quite a number of studies remaining in Book 1, it would not be wrong to start working on Guitar Fundamentals Book 2 at this point. Book 2 begins the process of exploring the upper pitch range of the guitar on the first three strings. However, it is still suggested that you work carefully through the difficult keys that are presented from here on. Aside from Lesson 28 and a short section on transposition at the very end of the book, the rest of the musical and technical concepts are not new. It is up to the individual player and teacher to determine if the above is a prudent suggestion.

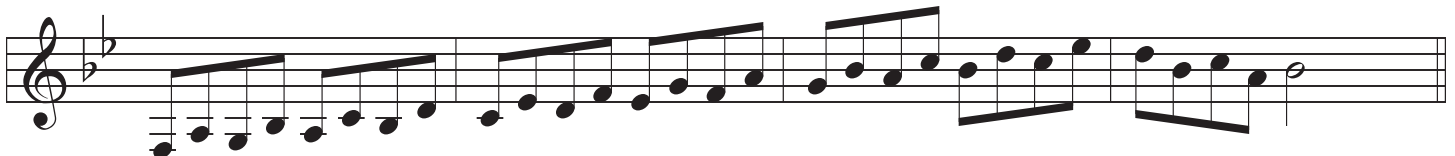
GF1 Lesson 22a.

Key of Bb Major (open)

Keys containing flats eliminate the use of some open strings. This is the reason that these keys are not so popular in general guitar literature. More commonly, one would simply use a closed fingering system to avoid the awkwardness but here, let's at least for a moment use the open position.



(The most common melodic leap is an interval of a third.)



The open position fingering gives us access to the very bottom range of this key on the guitar. The very low range on the guitar is very seldom used in melodic work.