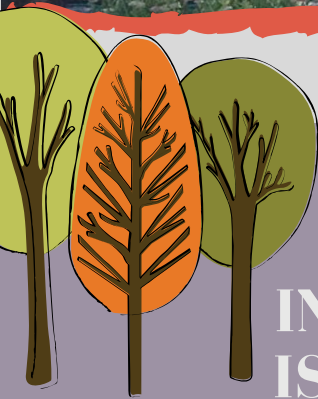


MOHAWK COLLEGE

EARLY CHILDHOOD EDUCATION PROGRAM



Left to right: Maria Agro, Melodie Spencer, Jackie Adams, Karen Davis, Kerry Drake, Melanie Graham, Angela Beltrano, Sue Bassett, Michelle Edey, Karen Shurvin, Matthew Cordero, Karen Boughton, Kathy Kemp, Kim Ann Laush

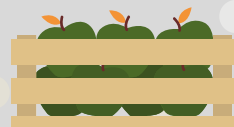


IN THIS ISSUE

- A Note from our Coordinator
- Welcome
- ECE Student Mentors
- Field Placement Updates
- Early Learners Physical Training Program



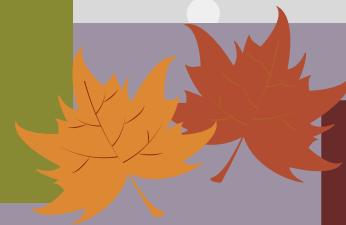
KAREN DAVIS,
ECE PROGRAM
COORDINATOR



Fall Greetings! With a new school year, comes new beginnings, new students, and a few new faces to our ECE team. Please see introductions below. We hope you enjoy this issue of our newsletter as we share some exciting new initiatives with you. In this issue, we share some new opportunities that we are offering to our students with an ECE Student Mentorship Program and Early Learners Physical Training Program. We are grateful for the feedback you provided in our survey a few months ago and will be incorporating a lot of this feedback into some new developments related to field placement. We would like to thank you for your continued support in providing field placement opportunities for our students. The success of our program lies in the support we receive from you and we are extremely thankful for the role you play in providing safe, engaging and nurturing learning environments.

Welcome

- Maria Agro
- Karen Boughton
- Matthew Cordero
- Kerry Drake



Our FPS team continues to do Field Placement visits to your sites so please feel free to reach out if you would like a visit! We love hearing from you!



Maria Agro
Field Placement
Specialist



Karen Boughton
Professor



Matthew Cordero
Professor



Kerry Drake
Professor

MOHAWK COLLEGE

EARLY CHILDHOOD EDUCATION PROGRAM

ECE Student Mentorship Program



MENTOR:

learning from someone who wants you to grow



This year we're piloting a second year ECE mentorship program. With the goal of easing the transition of first year students, this program will allow us to select 6 second year students through an application process to act as social mentors. They will support first year students through drop in hours, e-mail and face-to-face check-ins, answering general questions, referring students to additional supports in the college and sharing their experiences. We're excited to welcome the following students to our ECE Student Mentorship Team!

*Kaylea Azevedo Jesse Pecore Kailey Bastarache
Chloe Sawyer Amanda Marchalewicz Omnia Tahir*

Happy Retirement Shirley!

In June, we celebrated Shirley Bainbridge's retirement from Mohawk after 20 years as an ECE faculty. Congratulations Shirley!



Early Learners Physical Training

We are excited to be partnered with Hamilton Moves this Fall to be delivering a training session for 25 successful applicants from our Mohawk ECE and McMaster ECE Programs to receive certification with the Early Learners Physical Training Program. This will include information on Physical Literacy, Brain Development and Indoor/Outdoor Play. Students will be excited to share their new ideas out in the field.



FIELD PLACEMENT

Updates



We will be reaching out to our community partners in October regarding **Field Placements for the Winter Semester**. 1st & 2nd year students will be going out on placement the third week of January. Our Field Placement Request Form will look a bit different when you receive it by email in October. It is still an online process for confirming Field Placements within your agency/organization/school. If you need more information please reach out to one of the Field Placement Specialists: Maria Agro, Melanie Graham or Karen Shurvin.

We are going **PAPERLESS!** You may have noticed that we have started our journey to go paperless with our Field Placement Forms. We started with our Student Success Agreement and moved to an online Attendance Form which the students have been completing at the end of every week. A copy of this attendance is automatically sent to the Field Placement Mentor for review. If there is any discrepancy it states that the Field Placement Mentor will make contact with the Field Placement Specialist. We have also incorporated an online Field Placement Confirmation Form which is completed either during the orientation or by the end of the first day of placement. In the Winter Semester we will be piloting our first online Learning Outcomes Feedback Form with the first year students only. The second year students going out on their last Field Placement in the winter will continue to use the paper copy of the Learning Outcomes Feedback Form. We are always happy to receive feedback regarding the placement experience so please reach out to the Field Placement Team to share your experiences, ideas or general feedback.

New Name! You may start to notice the word "PRACTICUM" as our terminology is changing. Please note that Practicum and Field Placement are interchangeable and this change does not affect you in any way.

IMPORTANT DATES



Field Placement 2: Sept 25 - Nov 22
Break Week: October 14 - October 18