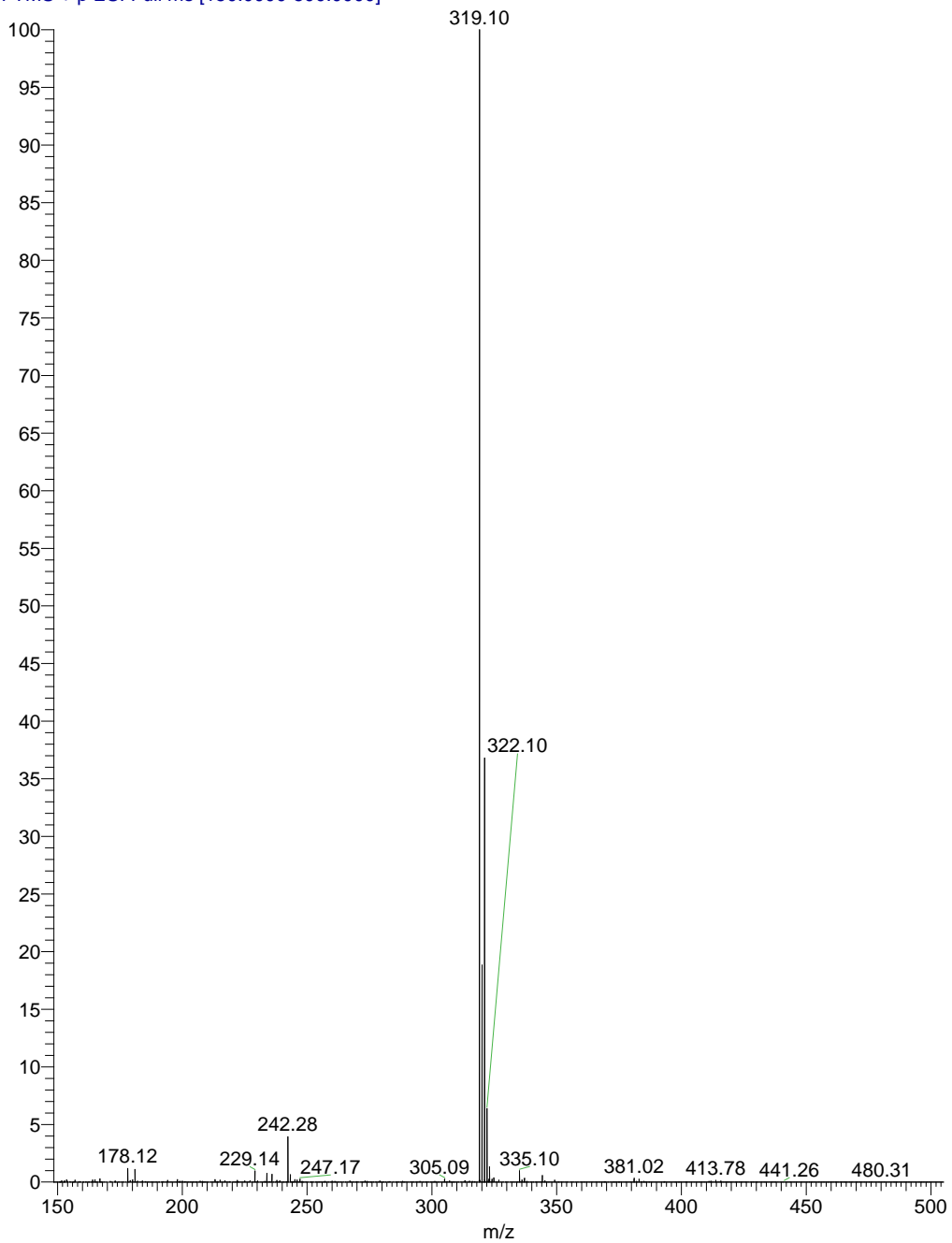


Chlor LC MS #1128-1299 RT: 9.46-10.62 AV: 172 NL: 1.68E7
T: FTMS + p ESI Full ms [150.0000-500.0000]



Chlor LC MS #1128-1299 RT: 9.46-10.62 AV: 172 NL: 1.68E7
T: FTMS + p ESI Full ms [150.0000-500.0000]

