

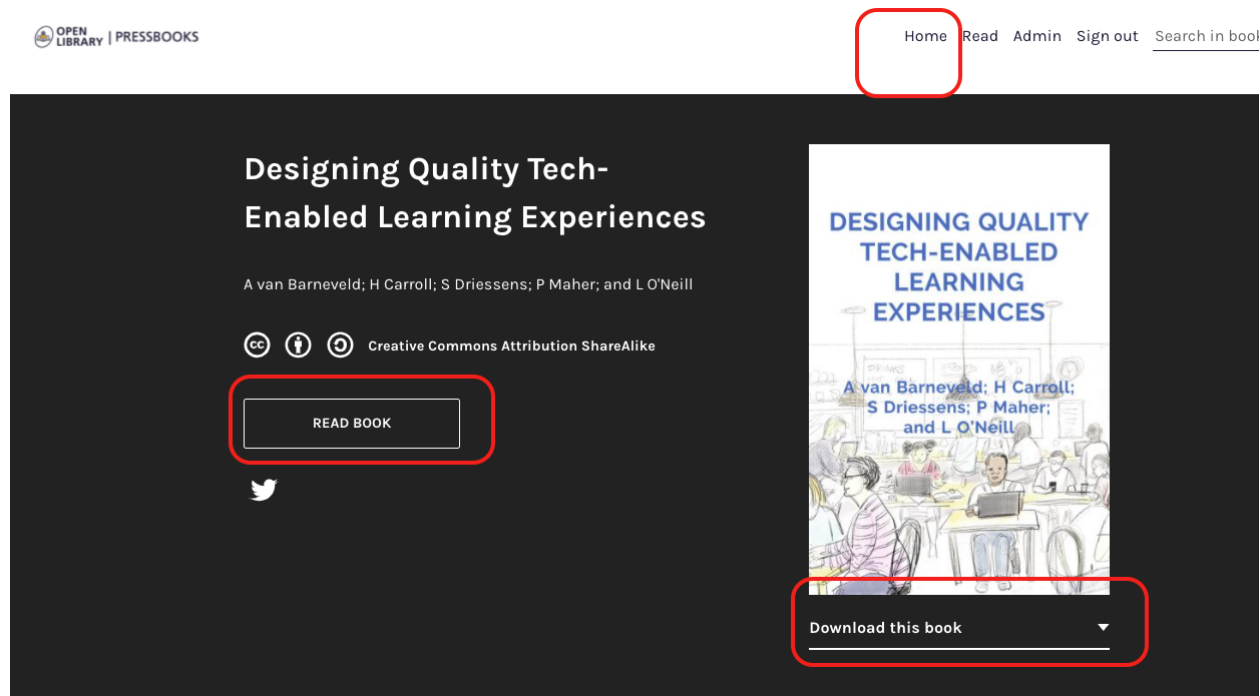
A learner success guide

March 2022



A quick navigation guide to get you started

When you visit the course homepage (If you do as directed and click the Home button) you will be presented with the course homepage:



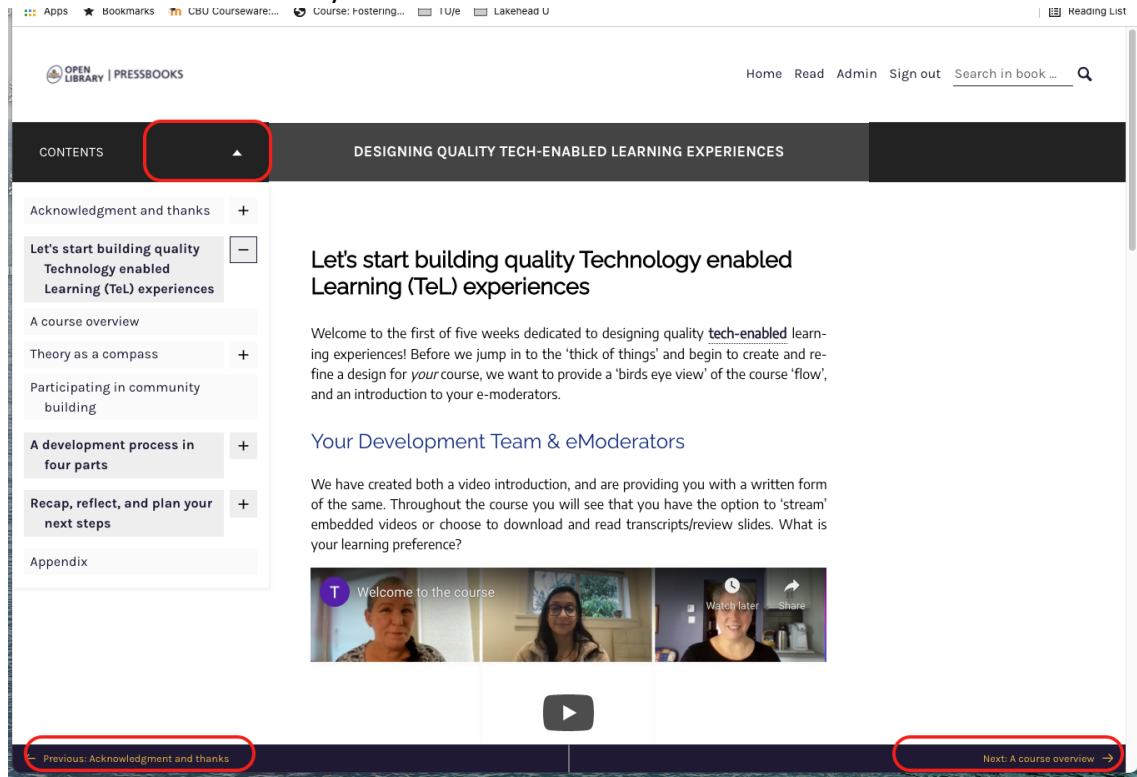
Option 1: Read Book (enter the course and navigate). You can choose to enter the course by clicking on the Read Book* button.

* Although Pressbooks uses the term 'book' in this instance, you will be provided the full course through the platform. Once you choose this option, you will be taken to the Introduction and can proceed through the Getting started, and into the core modules.

Option 2: Download the course as a book. Here you can also choose to download the majority of the course as one ePub or PDF (e.g., if you prefer to participate from a mobile device). You are able to download a PDF or ePub version of the course if you want to work offline (without an internet connection). In this format, you are able to use normal book features like

bookmarking so that you can mark the location in the course where you leave off. There is no feature that allows you to equally bookmark your location in the online version of the course (Read Book option).

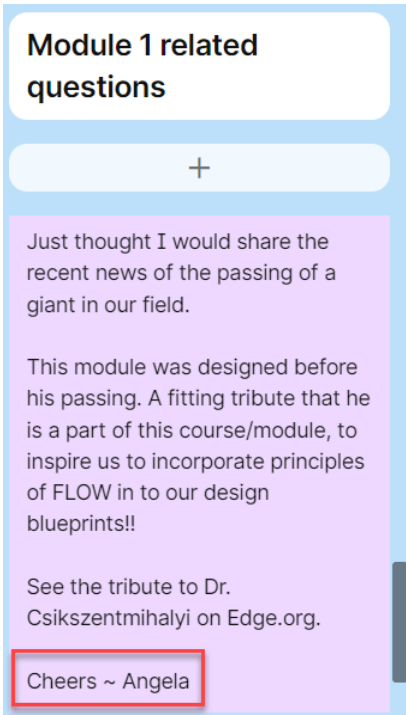
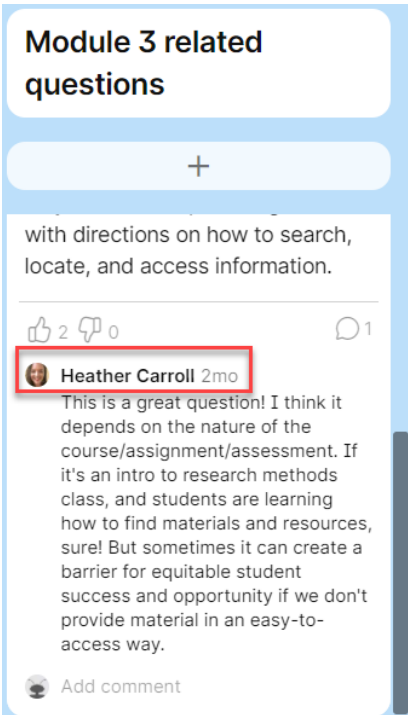
If you choose to 'read book' from a browser all navigation options may be visible (as below) but if navigating on a small mobile device you will need to explore the upper right corner menu for navigation options. From a web browser you can 'navigate' forward through the course using either the left panel 'Contents' pull-down menu, or the forward/backward navigation bars located at the bottom of your browser window:



Social Engagement

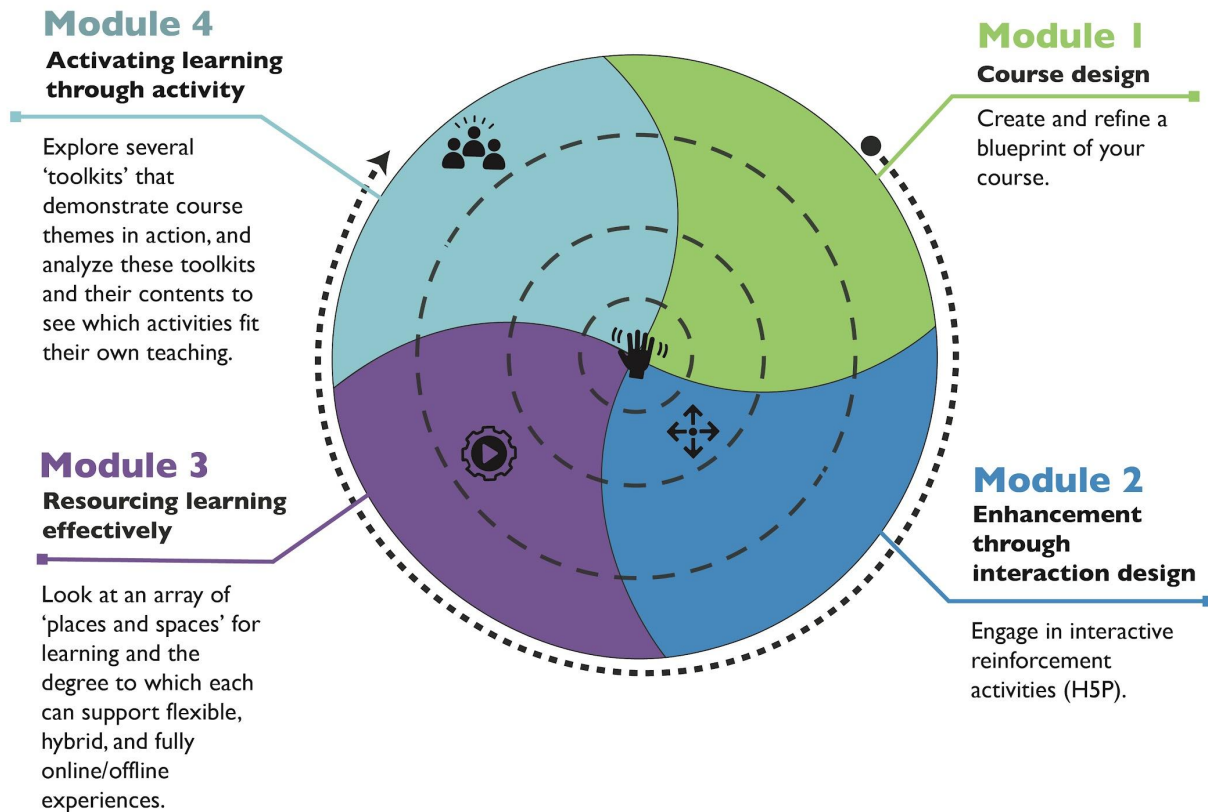
When using the social elements embedded in each module (moment where you can share your designs, review others and discuss course topics), your post may display as Anonymous (if you are not 'signed in'. If you want to include your name/details when sharing your design with others, you can either add your name to the bottom of your post (see Image 1) or sign-in to your own account prior to sharing/discussing the course (see Image 2).

An example using Padlet for course sharing/discussion:

| Image 1: Include your name in your post | Image 2: Display your name through Padlet account |
|--|---|
|  |  |

A Map for the Course

As you move through the course, you will navigate through four core modules: Course Design, Enhancement through Interaction Design, Resourcing Learning Effectively, and Activating Learning through Activity.



The above graphic is your roadmap for the course. As you navigate through the map, you will dip and dive into practices that help you to create and refine a blueprint for your course, weave in engaging interactive activities, explore multiple modalities to support learning, and consider activities to adopt or adapt for your blueprint.

As you navigate through the four modules, we have also provided you with a consistent structure, so that each module follows the same pathway:



Introduction



Expansion



Refinement/Application



Learning Community Participation

Ideally you will move through the course across the span of five weeks. By investing four hours each week to the course content, you will finish the course able to:

- **Apply** the knowledge, skills, and best resources from this course to the design and structure of your own course;
- **Create** quality, technology-enhanced (digital) learner experiences;
- **Design** and **develop** strategies to actualize equity, diversity, and inclusion within digital spaces;
- **Design** adaptations of pedagogical frameworks for activating learning, within digital spaces

With that said, this course was designed to meet you where you are and allow for a flexible structure where you can dip and dive in when it is appropriate for you. In the spirit of flexibility, you can also complete the course fully online, fully offline, or a combination of both (hybrid).

Online: Following this pathway you complete all course requirements from any location with a connection to the internet and a browser, following the schedule provided by your eModerator.

Offline: If offline is the preferred or the only manner of participating, you can complete approximately 70% of course as designed. In this manner, the course should be treated as a self-directed study. Expect only limited interaction with course elements or other persons.

Hybrid: You can download the course for offline review, and can complete creation and reflection activities while offline if this suits you best. To participate in the embedded learning community you will have to access the course through an internet connection and browser. It is best to bookmark the pages you want to return to when reconnecting to the course to make the best of this method.